



All rights for this document are the property of Citizen Systems Japan Co., Ltd.



The contents of this document may be changed without prior notice.

Copyright (C) CITIZEN SYSTEMS JAPAN CO.,LTD. All Right Reserved

This is an explanation for the DS80 Version Up Tool, to update the printer's firmware and color control data.

< Contents >

1. DS80 Version Up Tool Execute File Names	1
2. Running DS80 Version Up Tool	2
3. DS80 Version Up Tool Window Explanation	3
4. Starting the Update	4
5. Finishing the update	5

1. DS80 Version Up Tool Execute File Names

The DS80 Version Up Tool has a specific execute file for each version to be updated.

The execute file names provided with the DS80 Version Up Tool this time, and their corresponding update firmware and color control data versions are shown below.

DS80 Version Up Tool Execute File Name	DS80_0130.EXE
Firmware Version	DS80 1.30 Approval version (Data File Name DS80_0130.S)
Color Control Data Version and Checksum ()= Data File Name	DS80_300_0130.CWD FC36 (DS80_300_0130.CWD) DS80_600_0130.CWD 8D66 (DS80_600_0130.CWD) Approval version

When executing, save the 4 files shown above, and the 1 DLL file (CxStat.dll), all in the same directory.

(The firmware and color control versions shown in the following explanations differ from that provided at this time.)

2. Running DS80 Version Up Tool

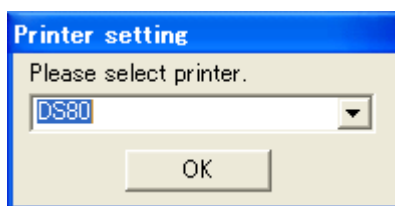
A printer driver needs to be installed when using this tool.

To begin with, turn on the printer and connect it to the host computer with the USB cable. Check that there is paper and ribbon set in the printer, the cover is closed, and there are no errors (the printer LED should be green).

Run the DS80 Version Up Tool execute file (*.EXE).

When running DS80 Version Up Tool, if there are multiple printer ports, the following printer select window will open.

Select the appropriate printer, and click "OK".



If there are no printer ports, the following confirmation window will open.

Check the printer driver of USB port where the printer is connected.

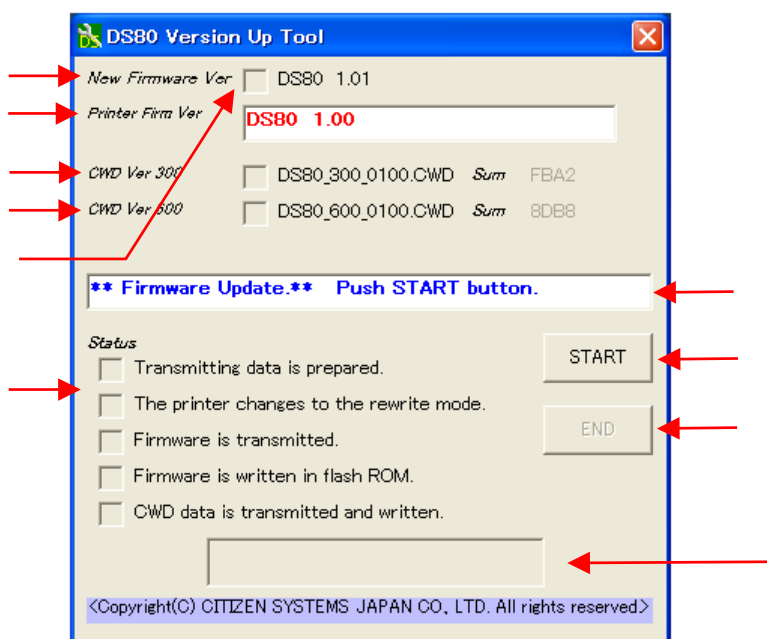
After checking that power is on and the USB is connected, click "Retry" to start the process again.

Clicking "Abort" will stop the update process.



3. DS80 Version Up Tool Window Explanation

Once DS80 Version Up Tool is running, the following window will open.

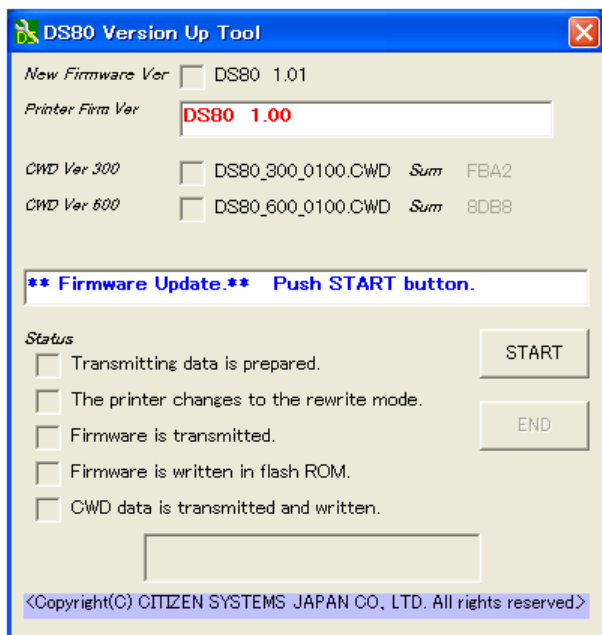


DS80 Version Up Tool Window

Printer Firm Ver	This displays the printer's current firmware version. If it differs from the new version, it will be displayed with red letters.
New Firmware	This displays the new firmware version that will be used in the update.
CWD Ver 300	This displays the new color control data (300 dpi resolution) version and checksum value (Sum) to be updated. When the update is complete, the Sum value will be displayed in blue.
CWD Ver 600	This displays the new color control data (600 dpi resolution) version and checksum value (Sum) to be updated. When the update is complete, the Sum value will be displayed in blue.
Check Box	This box will have a check if the new firmware or color control data has already been written to the printer, or if the update has been completed.
Status	This checks the progress status for the update.
Indicator	This shows the printer's current status, and the application operating command.
START	Update start button Clicking this button starts the update.
END	End the update.
Status Bar	Displays the progress status for the update.

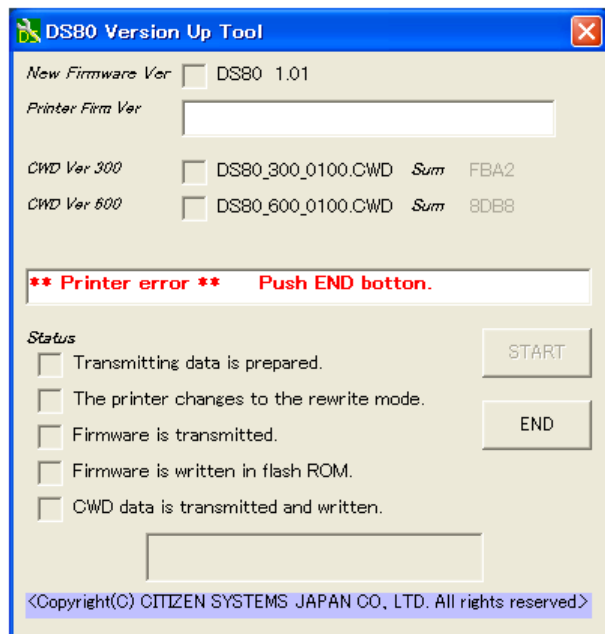
4. Starting the Update

On the DS80 Version Up Tool window, click the “START” button to begin the update.

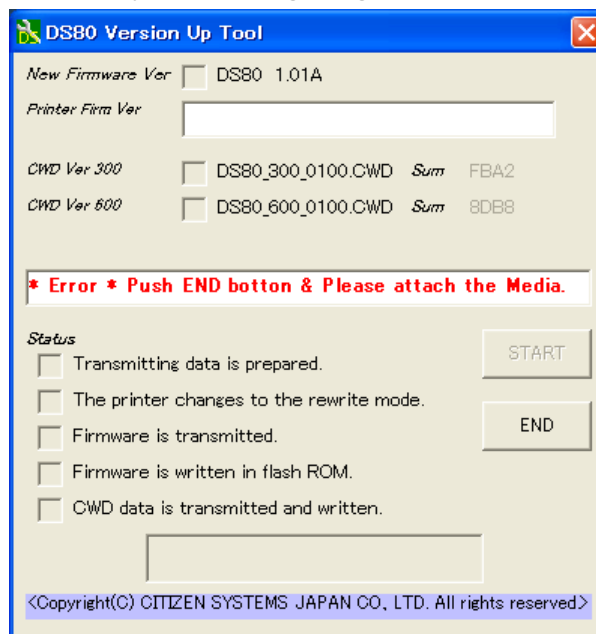


When starting the update, if the printer has error, the following printer error will be displayed. The same error will be shown if the USB cable is disconnected or the power is off.

If the printer has a ribbon error, media error will be displayed like a right figure.



Printer Error

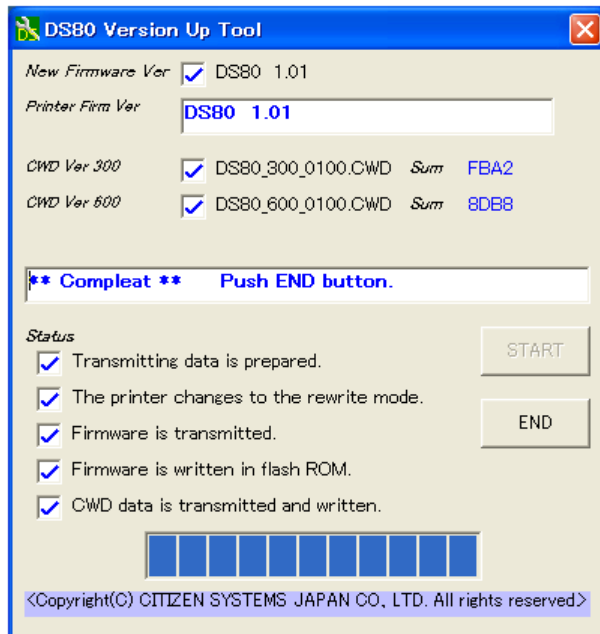


Ribbon End

If there is an error, click “END” or close the window to stop DS80 Version Up Tool, fix the error and attach the media, be sure there are no errors (printer LED is green), and run DS80 Version Up Tool again.

If the USB cable was disconnected or the power was off, check that the USB cable is connected and the power is turned on.

When you click “START” and start the update, the window display will change to the following, and you can check the update progress status.



! Notice !

While updating, do not disconnect the USB cable or turn the power off.

Also, do not start or run other software at the same time.

When the printer enters the rewrite mode, the LED will change from green to flashing green. When the firmware update is complete, the printer's buzzer will beep, the new firmware will be run automatically, and the color control data update will begin.

5. Finishing the update

When all the updates are complete, the window display will look like the following.

Also, the printer LED will revert from flashing green to green.

Confirm the New Firmware and New CWD Ver boxes are checked, and click the “END” button or close the window to end DS80 Version Up Tool.

Confirmation

